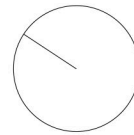


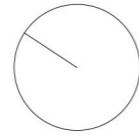
Parcela	Superficie m ²	Villa
1	548,35	Blanca
2	306,05	Aledo
3	306,05	Aledo
4	306,05	Aledo
5	306,05	Aledo
6	307,60	Aledo
7	309,15	Bullas
8	310,60	Bullas
9	312,05	Bullas
10	311,55	Aledo
11	387,65	Aledo
12	363,75	-
13	302,30	-
14	300,40	Bullas
15	301,75	Bullas
16	300,35	Bullas
17	301,05	Aledo
18	301,70	Aledo
19	302,20	Aledo
20	302,70	Aledo
21	458,55	Blanca





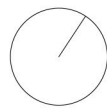
SUP. PLANTA BAJA TOTAL: 122,90m²
SUP. CONSTRUIDA: 105,65m² + PORCHE: 17,25m²



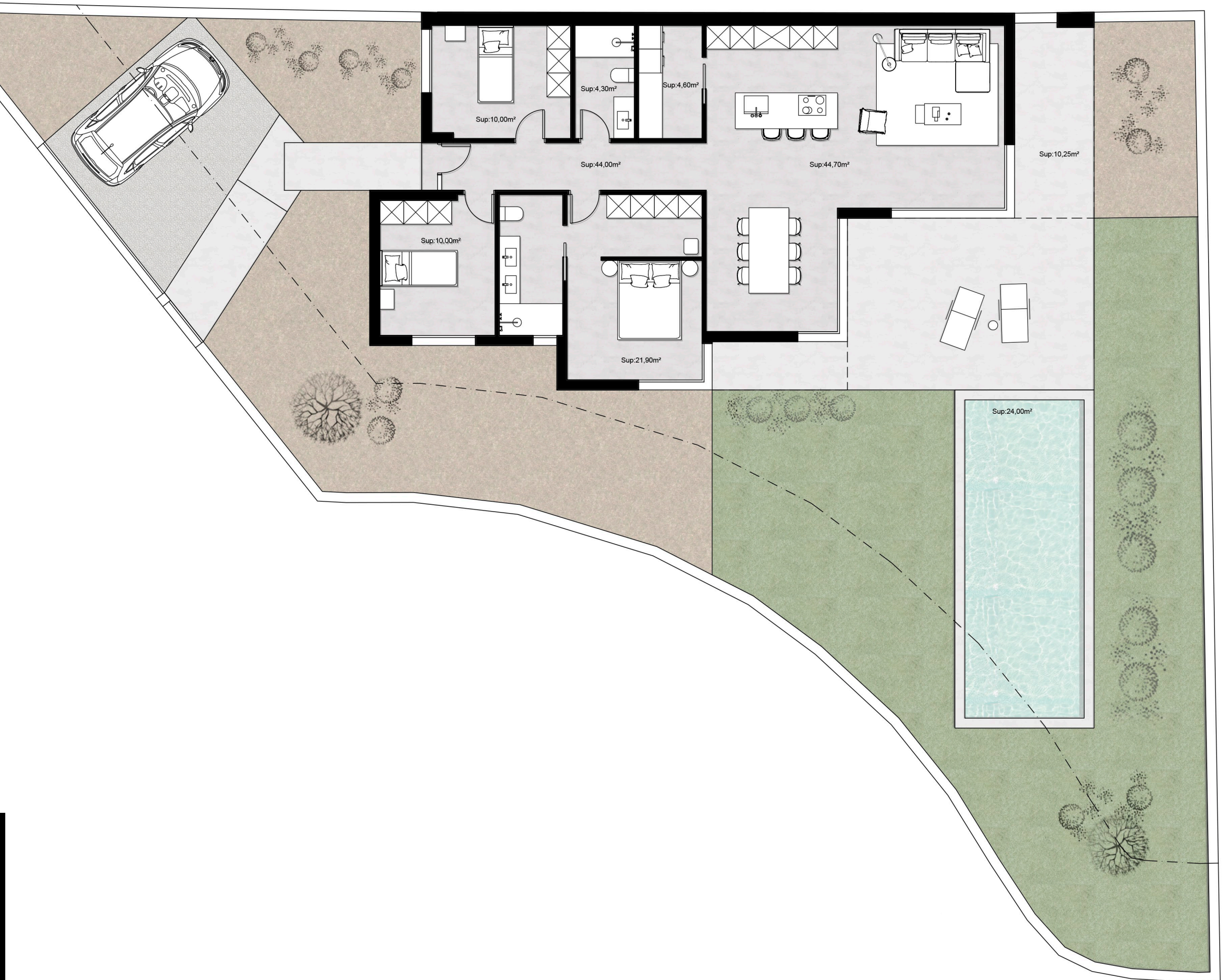


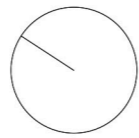
SUP. PLANTA BAJA TOTAL: 122,90m²
SUP. CONSTRUIDA: 105,65m² + PORCHE: 17,25m²





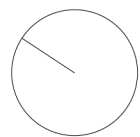
SUP. PLANTA BAJA TOTAL: 134,20m²
SUP. CONSTRUIDA: 120,05m² + PORCHE: 14,15m²





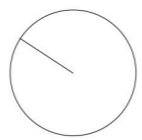
SUP. PLANTA BAJA TOTAL: 93,40m²
SUP. CONSTRUIDA: 83,75m² + PORCHE: 9,65m² .



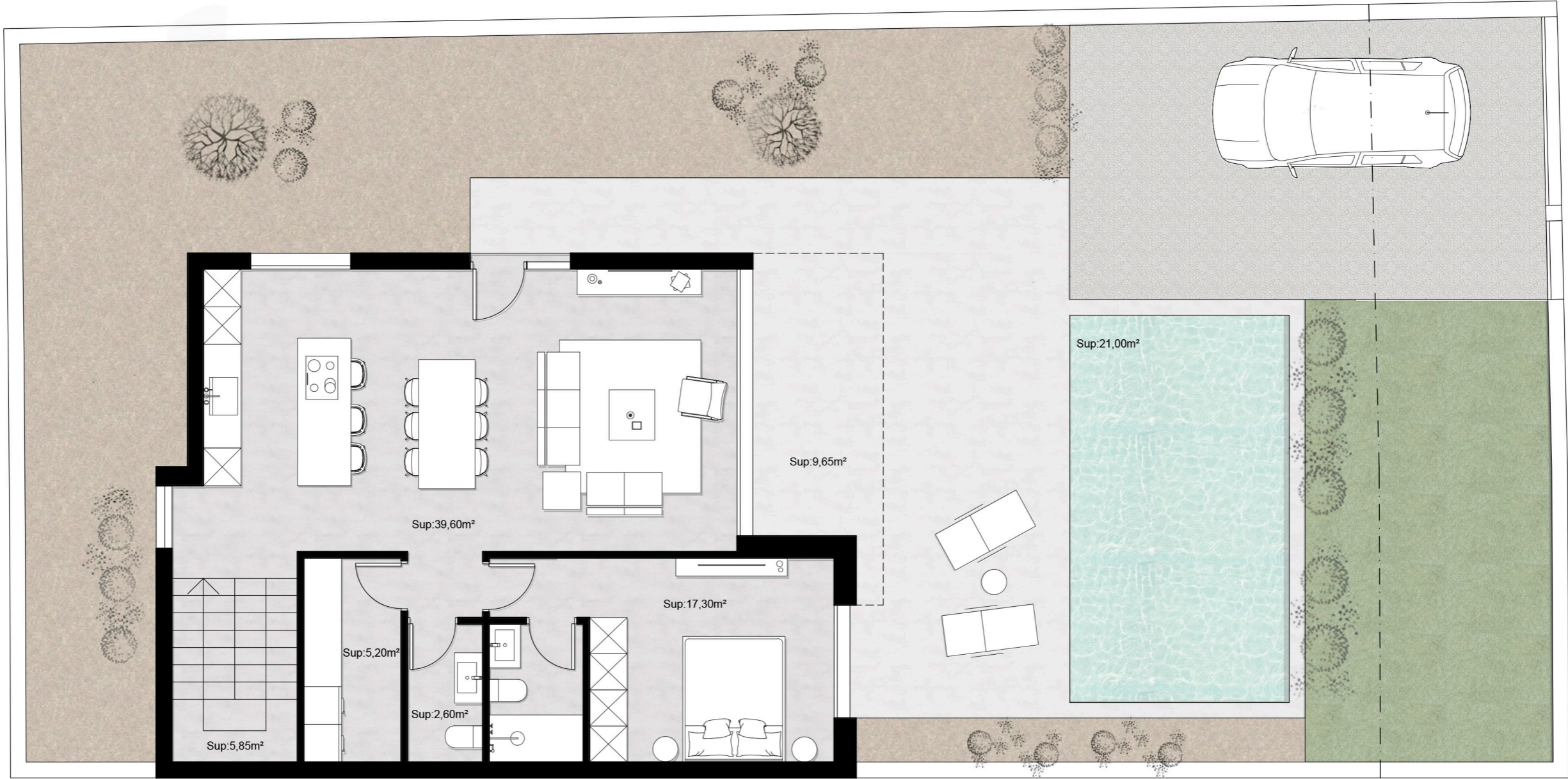


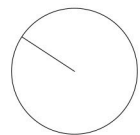
SUP. PLANTA ALTA TOTAL: 74,10 m²
SUP. CONSTRUIDA: 74,10 m²





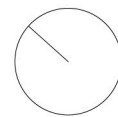
SUP. PLANTA BAJA TOTAL: 93,40m²
SUP. CONSTRUIDA: 83,75m² + PORCHE: 9,65m² .



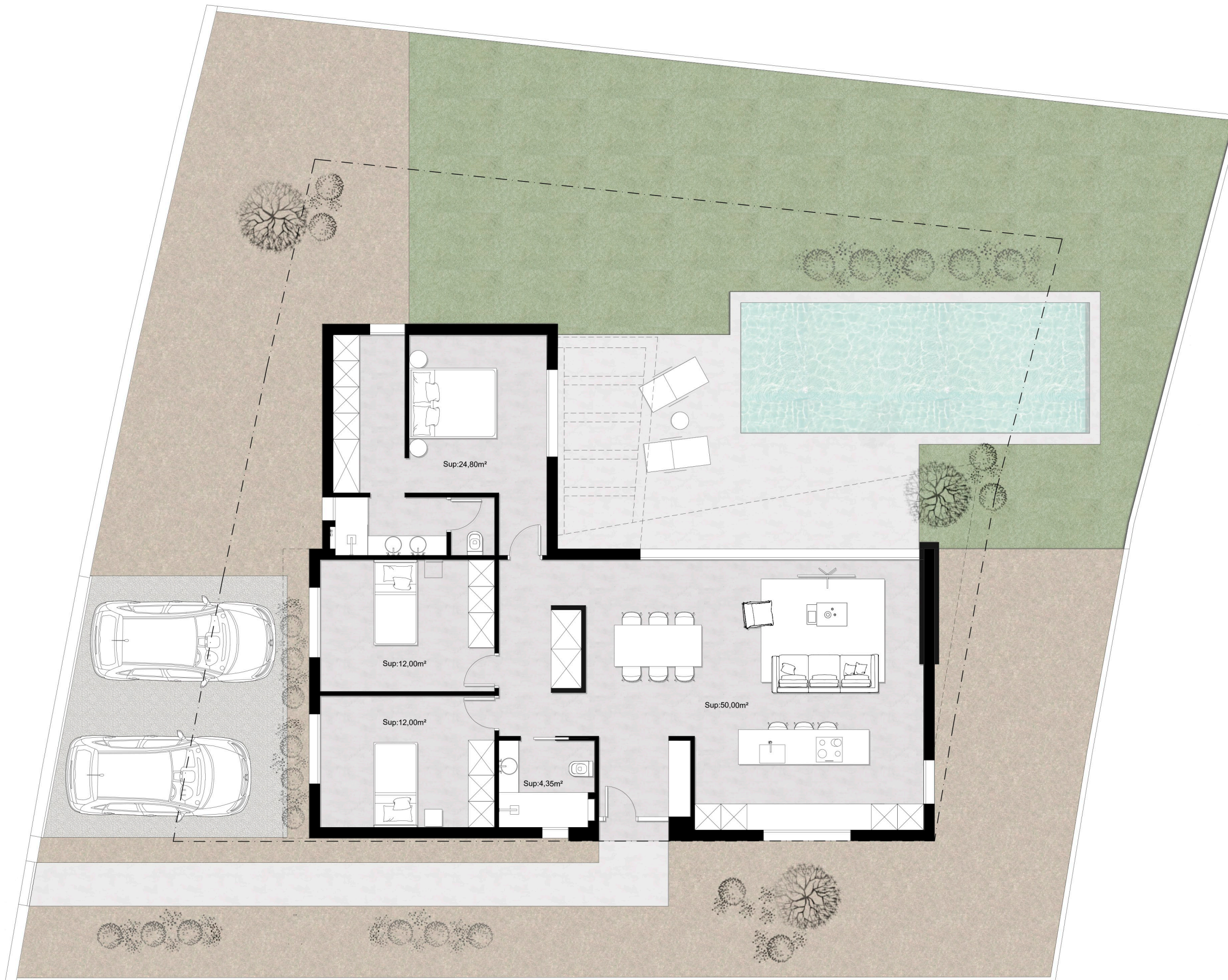


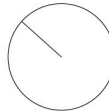
SUP. PLANTA ALTA TOTAL: 74,35 m²
SUP. CONSTRUIDA: 74,35 m²





SUP. PLANTA BAJA TOTAL: 138,45m²
SUP. CONSTRUIDA BAJA: 123,70m² + 14,75 m² PORCHE





SUP. PLANTA BAJA TOTAL: 138,45m²
SUP. CONSTRUIDA BAJA: 123,70m² + 14,75 m² PORCHE

